

30 Vno V *f* *p* *tast.* *p* *gliss.* C IV c. 3

Vc. *f* *pp* *f* 3 3 3 3 3 3 3 3 3 3 *p* *tast.* *p*

30 *pp* 3 3 3 3 3 3 *mf* *l.v.* *mp* *l.v.*

35 Vno *ord.* 3 *sf* *mp* 5 5 5 3 3 *mf*

Vc. 3 *ord.* *pp* *sf* *mf* III c. *mf*

35 3 3 3 3 3 3 *f* *pp* *mf* *p* *mf* *l.v.*

50

Vno *tast.* *pp* *leggero* *detaché pont.*

Vc. *pp* *mf* *pont.* *gliss.*

50 *p* *f* *p* *f* *p* *f*

Leg. *Leg.* *

54

Vno *pressing* *p* *f* *f* *mf* *3 ord.*

Vc. *sf* *mp* *3 ord.*

54 *3* *meno* *f* *5* *meno* *cresc.* *loco*

Leg. *Leg.* *8va* *8vb*

6
59

Vno

Vc.

E pont.

sf mp

f

ff

mp

legatissimo

gliss.

f

ff

fff

pp *legatissimo*

PT

Red. 8va

8va

loco 6 6 6

pp

Vno

Vc.

3 pont.

p

ff

pp

63

ff

pp simile

loco 3 6 6 6

8va

8vb

Red.

*

77

Vno MP *tast. softly* *f* 7

Vc. MP *sfz* *tast.* *f* 6 6 6 6

77 *f* L.V. *sfz* via PT *

77 *f* *sfz*

81 *simile* 5 5 5 *mp*

Vc. 3 3 3 3 3 *mp*

81 *mf* *mp* *mp* *ord.* *mp*

81 *mf* *sfz* *meno* *sfz* *meno* *sfz*

96

Vno

freddo

Vc.

96

cresc.

99

Vno

gliss.

Vc.

f

99

ff

G

H
♩ = 60
pont.

Vno 102 *ff* 10 5 5 5

Vc. *mf* 8

Piano 102 *sf* *mp* *sf*³ *f* *leg.*

Vno 105 **I** arco *mf*⁵ *p* *p* *ppp* *legato* alla punta molto pont.

Vc. *p*³ *p*³ 3 3 3 3 3 3 3 3

Piano 105 *sf* *l.v.* *l.v.* *p* *L.V.* *f*

J
T.po I

Vc.

Musical notation for Violoncello (Vc.). The score is in 3/4 time and then changes to 4/4. It features a pizzicato (pizz.) section starting at measure 116, marked with a piano (*p*) dynamic. This is followed by a section marked *mp* (mezzo-piano) with a five-measure phrase. The piece concludes with a section marked *sf* (sforzando) and *p* (piano), with a *lunga* (long) hairpin and a triplet of eighth notes.

Musical notation for Piano (Pno.). The score is in 3/4 time and then changes to 4/4. It features a forte (*f*) section starting at measure 116, marked with a *leg.* (leggiero) hairpin. This is followed by a section marked *ff* (fortissimo) with a *lunga* (long) hairpin and a triplet of eighth notes.

Vno

Musical notation for Violino (Vno) and Violoncello (Vc.). The Vno part starts at measure 120 with a triplet of eighth notes. The Vc. part also starts at measure 120 with a triplet of eighth notes. The Vno part includes markings for *arco* (arco) and *pizz.* (pizzicato). The Vc. part includes markings for *arco jeté* and *pizz.* (pizzicato). The dynamic marking *mf* (mezzo-forte) is present.

Musical notation for Piano (Pno.). The score starts at measure 120 with a *pp* (pianissimo) *leggero* (leggiero) section. It features a triplet of eighth notes and a *8vb* (8va below) marking.

* 1 C no Ped.

126

Vno *pizz.* *arco* *pont.* *p* *f* *ff*

Vc. *arco NV* *f teso*

126

loco *f* *ff cattivo*

8^{vb} .3C

129

Vno *ord.* *ff* *p leggero* *alla punta* *pizz.*

Vc. *simile* *p leggero*

129

p softly

8^{vb} .3C

141

Vno

Vc.

141

pp *p*

Leo. *5*

145

Vno

Vc.

145

pp *mf* *mp*

Leo. *PT* *5*

149

Vno

Vc.

ord.

p

fading away

pp

mp

mf

f

pp

pp

8va

leg.

* l.v.

*

* let resound to complete silence

NOTE INTRODUTTIVE / INTRODUCTION

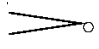
Talvolta visualizzo il suono come un colore distribuito a larghe pennellate lungo l'arco temporale e la cui superficie, pur apparentemente uniforme, rivela increspature, ispessimenti e trascolorazioni continue che lo rendono inquieto e a tratti rabbioso. Come il blu delle acque profonde o dei cieli senza luna.

I happen to visualize sounds as a colour spread by means of broad brush-strokes over the timeline. Its shade, although apparently even, discloses rippings, thickenings and nuances that make it restless and sometimes violent. Like the blue of deep waters or moonless nights.

AVVERTENZE / PERFORMANCE NOTES

Generali / General notes

Le alterazioni sono valide all'interno della battuta / *Accidentals are valid within the measure*

 al nulla / *to silence*

Violino e violoncello / *Violin and cello*

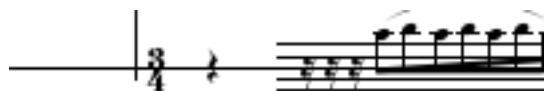
NV non vibrato

MP con molta pressione (dell'arco) / *with great pressure (of the bow)*

Glissando ascendente all'altezza più acuta possibile / *ascending glissando to the highest pitch possible*



Accelerazione progressiva all'interno della figura / *increasing speed within the grouping*



Ribattuto della stessa nota / *Ribattuto of the same pitch*



Pianoforte / *Piano*

PT pedale tonale / *sostenuto pedal*

L'uso del pedale di risonanza è implicito in tutto il pezzo, a parte dove indicato altrimenti.
Si raccomanda il cambio di pedale a ogni cambio armonico. / *Use the sustaining pedal throughout the whole piece, except where otherwise indicated. Change of pedal at each new chord is recommended.*

l.v. = lasciar vibrare / *let resound*

Ribattuto a velocità crescente; numero delle ripetizioni ad libitum entro il valore indicato/ *Ribattuto at increasing speed; the amount of repetitions is ad lib. according to the rhythmical duration.*



